

*Next Generation
Fluid Heads &
Tripod Systems*



Elite-Series



All Camgear Elite Tripod Systems are
equipped with our patented breakthrough
3S-FIX (one lock) Lock & Release mechanism.



Patented Single or Dual Counterbalance Adjusting System

With our Elite-Series we took our super reliable step counterbalance mechanism to new heights of robustness and refinement. Our patented dual wheel counterbalance system efficiently reduces the gap between each step, so much so that we have achieved virtual perfect seamless balance. This means you can achieve almost instantly and repeatedly the most accurate and precise camera balance position available in the world today.

CAMRADE

Camgear Elite Tripod Systems are supplied with high-end camRade tripoDBags

For the first time in tripod history, Camgear is supplying its tripod systems not just in padded bags, but in world class reinforced soft cases from camRade. These tough and stylish tripoDBags feature water-resistant 1000 denier Cordura® exteriors, YKK® zippers and a rich deep blue soft padded interior. System transport is provided by rugged wheels and fully adjustable padded shoulder straps. The bags' interior features two fully adjustable bumpers to customize the layout and several pockets with zippers.



The New 3S-FIX (one lock) Tripod System

The 3S-FIX tripods, included in all Elite-Series tripod systems, come equipped with the new patented (one lock) Lock & Release system, making the locking and unlocking of the tripod legs a breeze. They also feature other innovations, such as magnetic leg system locks, eliminating the need for legs clips, allowing lightning fast setups and takedowns.

Introducing Elite Heads with the 3S-FIX tripods

The Elite-Series heads inherit their world renowned smooth and precise drag movement from our existing range of Camgear fluid heads. But they also feature a new ergonomic architecture, a new patented ultra-precise, repeatable and accurate counterbalance system allowing virtually perfect balance an industry first for a stepped drag system and a host of practical features designed to guarantee dramatically improved performance and ease of use, in total not just an evolution, but a revolution.



Reliability, durability and convenience is what you can expect from the new Camgear Elite-Series.



Index

FLUID HEADS & TRIPOD SYSTEMS

Elite 8	Payload max. 10kg	Bowl 75mm
Elite 8 Fluid Head	10	
Elite 8 GS CF	10	
Elite 8 GS AL	10	
Elite 8 MS CF	11	
Elite 8 MS AL	11	

Elite 10	Payload max. 12kg	Bowl 100mm
Elite 10 Fluid Head	12	
Elite 10 GS CF	12	
Elite 10 GS AL	12	
Elite 10 MS CF	13	
Elite 10 MS AL	13	

Elite 12	Payload max. 15kg	Bowl 100mm
Elite 12 Fluid Head	14	
Elite 12 GS CF	14	
Elite 12 GS AL	14	
Elite 12 MS CF	15	
Elite 12 MS AL	15	

Elite 15	Payload max. 19kg	Bowl 100mm
Elite 15 Fluid Head	16	
Elite 15 GS CF	16	
Elite 15 GS AL	16	
Elite 15 MS CF	17	
Elite 15 MS AL	17	

Elite 18	Payload max. 25kg	Bowl 100mm
Elite 18 Fluid Head	18	
Elite 18 GS CF	18	
Elite 18 GS AL	18	
Elite 18 MS CF	19	
Elite 18 MS AL	19	
Elite 18 EFP GS CF	20	
Elite 18 EFP MS CF	20	

Elite 20	Payload max. 29kg	Bowl 100mm
Elite 20 Fluid Head	22	
Elite 20 EFP GS CF	23	
Elite 20 EFP MS CF	23	
Elite 25	Payload max. 45kg	Bowl 150mm
Elite 25 Fluid Head	24	
Elite 25 EFP GS CF	25	
Elite 25 EFP MS CF	25	

3S-FIX TRIPODS

3S-FIX T75/AL2 GS	28
3S-FIX T75/CF2 GS	29
3S-FIX T100/AL2 GS	30
3S-FIX T100/CF2 GS	31
3S-FIX ENG/AL2 GS	32
3S-FIX ENG/CF2 GS	33
3S-FIX EFP100/CF2 GS	34
3S-FIX EFP150/CF2 GS	35

ACCESSORIES

Ground Spreaders	36
Dollies	36
Mid Level Spreaders & Rubber Feet	37
Pan Bars	37
Wedge Plates	38
Adapter plates	38
Bowl Clamps	38
Bags & Cases	39

Practical Features

Elite Fluid Heads

Parking Position for Spare Camera Screws

All Elite heads have a parking position for spare camera screws.

Hidden Screw Key

The (patented) hidden screw key is smartly inserted into the front of the sliding plate.

Exchangeable Wedge Plate

The Elite wedge plates are exchangeable with Sachtler Touch & Go plates.

Exchangeable Pan Bar Rosette

All Elite heads have an exchangeable aluminum pan bar rosette which ensures fast replacement when a rosette is worn.

Illuminated Touch Bubble

All Elite heads are equipped with a pressure activated Self-Illuminated Touch Bubble.

Tilt Brake Knob

Manufactured from hardened aluminum for superior durability. Angle adjustable for operator preference.

Our Counterbalance System

The world's most sophisticated and accurate stepped counterbalance system. Providing virtually perfect balance.

Our New Quick Release Knob

An entirely new and robust design, engineered for unequalled reliability and ease of use.

Improved structure

Dramatically improved torsional strength and stiffness, now the industry leader.



Practical Features

3S-FIX Tripods

Unlike competing brands of quick lock tripods, our linkage mechanism between the upper and lower leg clamp are actually inside the leg tube, a design breakthrough which prevents breakage caused by direct impact on the exposed linkage mechanism.

Pull the 3S-FIX clamp out to unlock both upper and lower stages. To lock, push the clamp back in again. Simple, elegant and robust.

Both the upper and lower leg locks can be adjusted separately and easily, avoiding the common problem of a tight upper brake and loose lower brake or vice versa.

The adjustment of the lower brake is extremely accessible, easy and fast to adjust.

New Rubber Feet

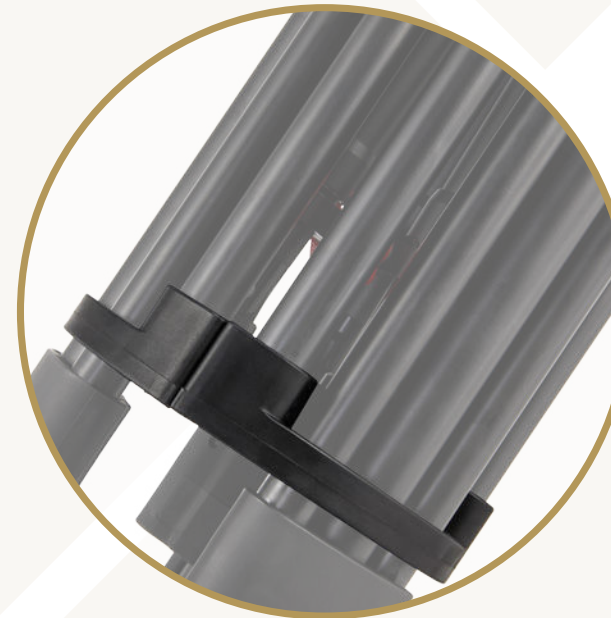
The new Rubber Feet provide more skid resistance to ensure better stability of the tripods.

Iconic 3S-FIX clamp

All Elite-Series tripod systems are equipped with the patented 3S-FIX Quick Lock & Release mechanism and new unique brake handle for fast and easy deployment. The 3S-FIX stands for *Stronger, Smarter, Speedier*. It makes locking and unlocking the tripod legs a breeze.



Strong | Smart | Speed



Integrated Magnetic Lock System

Those dated and bothersome lock clips of old have been replaced by a unified magnetic leg lock system. This eliminates broken clips and ensures superior ease of use, speed and durability.

Camgear Elite 8

Payload 10KG

Bowl 75MM

Camgear Elite 8 Fluid Head

Fluid Head incl. Elite Wedge Plate TNG-DV & Elite Pan Bar ELPB-1
SKU: CMG-EL8-FLHEAD

Specifications

Model Number	Elite 8
Maximum Payload	10 kg/22 lbs
Camera Platform Type	Elite Wedge Plate TNG-DV
Sliding Range	70 mm/2.76 in
Camera Plate	1/4" screw, 3/8" screw
Counterbalance System	10 steps (1-10)

Pan & Tilt Drag	4 steps (1-4)
Pan & Tilt Range	Pan: 360° / Tilt: +90/-75°
Temperature Range	-40°C to +60°C/-40 to +144°F
Levelling Bubble	Illuminated Touch Levelling Bubble
Weight	2.84 kg/6.26 lbs
Bowl Diameter	75 mm

The Elite 8 fluid head is the premier P/T head available in its payload class. With a payload capacity of 10 kg/22 lbs, it is optimally designed for lightweight camcorders, modern film cameras such as the Canon XC15, XA30/35, JVC GY-HM200 and all DSLR cameras to be perfectly balanced, unlike any other design, for stunning images.

The Elite 8 tripod systems come with the matching patented Elite 75 mm 50 kg/110 lbs capacity 3S-FIX Quick Lock & Release tripod, illuminated levelling bubble with sliding plate screw parking positions and the integrated screw key to make your operation run smoothly.



Camgear Elite 8 GS CF Bowl 75MM

Tripod System incl. Elite 8 Fluid Head, Carbon Fiber Tripod & Ground Spreader.
SKU: CMG-EL8-GS-CF-TRISYS

System Configuration

Elite 8 Fluid Head
3S-FIX T75/CF2 Carbon Fiber Tripod
Elite Pan Bar ELPB-1
Ground Spreader GS-2
camRade tripodBag Traveler



Weight	7.45 kg/16.42 lbs
Height Range	0.51-1.68 m/20-66.1 in
Transport Length	0.87 m/34.3 in
Section	2 Stages

Camgear Elite 8 GS AL Bowl 75MM

Tripod System incl. Elite 8 Fluid Head, Aluminum Tripod & Ground Spreader.
SKU: CMG-EL8-GS-AL-TRISYS

System Configuration

Elite 8 Fluid Head
3S-FIX T75/AL2 Aluminum Tripod
Elite Pan Bar ELPB-1
Ground Spreader GS-2
camRade tripodBag Traveler



Weight	8.18 kg/18.03 lbs
Height Range	0.51-1.68 m/20-66.1 in
Transport Length	0.87 m/34.3 in
Section	2 Stages

Camgear Elite 8 MS CF Bowl 75MM

Tripod System incl. Elite 8 Fluid Head, Carbon Fiber Tripod & Mid Level Spreader.
SKU: CMG-EL8-MS-CF-TRISYS

System Configuration

Elite 8 Fluid Head
3S-FIX T75/CF2 Carbon Fiber Tripod
Elite Pan Bar ELPB-1
Mid Level Spreader MSP-3
Rubber Feet RF-2 (x3)
camRade tripodBag Traveler



Weight	7.91 kg/17.44 lbs
Height Range	0.56-1.61 m/22-63.4 in
Transport Length	0.87 m/34.3 in
Section	2 Stages

Camgear Elite 8 MS AL Bowl 75MM

Tripod System incl. Elite 8 Fluid Head, Aluminum Tripod & Mid Level Spreader.
SKU: CMG-EL8-MS-AL-TRISYS

System Configuration

Elite 8 Fluid Head
3S-FIX T75/AL2 Aluminum Tripod
Elite Pan Bar ELPB-1
Mid Level Spreader MSP-3
Rubber Feet RF-2 (x3)
camRade tripodBag Traveler



Weight	8.64 kg/19.05 lbs
Height Range	0.56-1.61 m/22-63.4 in
Transport Length	0.87 m/34.3 in
Section	2 Stages

Camgear Elite 10

Payload 12KG Bowl 100MM

Camgear Elite 10 Fluid Head

Fluid Head incl. Elite Wedge Plate TNG-16 & Elite Pan Bar ELPB-1
SKU: CMG-EL10-FLHEAD

Specifications

Model Number	Elite 10
Maximum Payload	12 kg/26.5 lbs
Camera Platform Type	Elite Wedge Plate TNG-16
Sliding Range	80 mm/3.15 in
Camera Plate	1/4" screw, 3/8" screw
Counterbalance System	12 steps (1-12)

Pan & Tilt Drag	4 steps (1-4)
Pan & Tilt Range	Pan: 360° / Tilt: +90/-75°
Temperature Range	-40°C to +60°C/-40 to +144°F
Levelling Bubble	Illuminated Touch Levelling Bubble
Weight	3.3 kg/7.28 lbs
Bowl Diameter	100 mm

The Elite 10 fluid head is engineered for set-ups of up to 12 kg/26.4 lbs. The 12 step counterbalance wheel adjustment system enables finer and faster counterbalance settings for virtual perfect balance. The camera can easily be switched from tripod to handheld and vice versa using the quick release lever, allowing the camera and plate to release in one swift sure movement. Perfect support for today's digital cinema-style cameras, such as the Sony PXW-FS7, Canon EOS C200/C300/C300 MARK II, Blackmagic URSA Mini Pro & Panasonic AU-EVA1.

The Elite 10 tripod systems come with the matching patented Elite 3S-FIX Quick Lock & Release 100 mm 50 kg/110 lbs capacity tripod, illuminated levelling bubble with sliding plate screw parking positions and the integrated screw key to make your operation run smoothly.



Camgear Elite 10 GS CF Bowl 100MM

Tripod System incl. Elite 10 Fluid Head, Carbon Fiber Tripod & Ground Spreader.
SKU: CMG-EL10-GS-CF-TRISYS

System Configuration

Elite 10 Fluid Head
3S-FIX T100/CF2 Carbon Fiber Tripod
Elite Pan Bar ELPB-1
Ground Spreader GS-2
camRade tripodBag Traveler



Weight	7.98 kg/17.59 lbs
Height Range	0.51-1.68 m/20-66.1 in
Transport Length	0.87 m/34.3 in
Section	2 Stages

Camgear Elite 10 GS AL Bowl 100MM

Tripod System incl. Elite 10 Fluid Head, Aluminum Tripod & Ground Spreader.
SKU: CMG-EL10-GS-AL-TRISYS

System Configuration

Elite 10 Fluid Head
3S-FIX T100/AL2 Aluminum Tripod
Elite Pan Bar ELPB-1
Ground Spreader GS-2
camRade tripodBag Traveler



Weight	8.7 kg/19.18 lbs
Height Range	0.51-1.68 m/20-66.1 in
Transport Length	0.87 m/34.3 in
Section	2 Stages

Camgear Elite 10 MS CF Bowl 100MM

Tripod System incl. Elite 10 Fluid Head, Carbon Fiber Tripod & Mid Level Spreader.
SKU: CMG-EL10-MS-CF-TRISYS

System Configuration

Elite 10 Fluid Head
3S-FIX T100/CF2 Carbon Fiber Tripod
Elite Pan Bar ELPB-1
Mid Level Spreader MSP-3
Rubber Feet RF-2 (x3)
camRade tripodBag Traveler



Weight	8.44 kg/18.61 lbs
Height Range	0.56-1.61 m/22-63.4 in
Transport Length	0.87 m/34.3 in
Section	2 Stages

Camgear Elite 10 MS AL Bowl 100MM

Tripod System incl. Elite 10 Fluid Head, Aluminum Tripod & Mid Level Spreader.
SKU: CMG-EL10-MS-AL-TRISYS

System Configuration

Elite 10 Fluid Head
3S-FIX T100/AL2 Aluminum Tripod
Elite Pan Bar ELPB-1
Mid Level Spreader MSP-3
Rubber Feet RF-2 (x3)
camRade tripodBag Traveler



Weight	9.16 kg/20.19 lbs
Height Range	0.56-1.61 m/22-63.4 in
Transport Length	0.87 m/34.3 in
Section	2 Stages

Camgear Elite 12

Payload 15KG Bowl 100MM

Camgear Elite 12 Fluid Head

Fluid Head incl. Elite Wedge Plate TNG-16 & Elite Pan Bar ELPB-1
SKU: CMG-EL12-FLHEAD

Specifications

Model Number	Elite 12
Maximum Payload	15 kg/33 lbs
Camera Platform Type	Elite Wedge Plate TNG-16
Sliding Range	80 mm/3.15 in
Camera Plate	1/4" screw, 3/8" screw
Counterbalance System	4+10 steps (1-4, 1-10)

Pan & Tilt Drag	6 steps (1-6)
Pan & Tilt Range	Pan: 360° / Tilt: +90/-75°
Temperature Range	-40°C to +60°C/-40 to +144°F
Levelling Bubble	Illuminated Touch Levelling Bubble
Weight	3.46 kg/7.63 lbs
Bowl Diameter	100 mm

The compact Elite 12 is a perfect match for small lightweight ENG cameras and other film cameras with higher profiles and COG of up to 15 kg/33 lbs. With a combined 40 positions of counterbalance the Elite 12 can virtually perfectly balance any payload between 0 and 33 pounds, a world's first.

The Elite 12 tripod systems come with the matching patented Elite 3S-FIX Quick Lock & Release 100 mm 70 kg/154 lbs capacity tripod, illuminated levelling bubble with sliding plate screw parking positions and the integrated screw key to make your operation run smoothly.



Camgear Elite 12 GS CF Bowl 100MM

Tripod System incl. Elite 12 Fluid Head, Carbon Fiber Tripod & Ground Spreader.
SKU: CMG-EL12-GS-CF-TRISYS

System Configuration

Elite 12 Fluid Head
3S-FIX ENG/CF2 Carbon Fiber Tripod
Elite Pan Bar ELPB-1
Ground Spreader GS-2
camRade tripodBag Traveler



Weight	8.54 kg/18.83 lbs
Height Range	0.55-1.72 m/21.7-67.7 in
Transport Length	0.89 m/35 in
Section	2 Stages

Camgear Elite 12 GS AL Bowl 100MM

Tripod System incl. Elite 12 Fluid Head, Aluminum Tripod & Ground Spreader.
SKU: CMG-EL12-GS-AL-TRISYS

System Configuration

Elite 12 Fluid Head
3S-FIX ENG/AL2 Aluminum Tripod
Elite Pan Bar ELPB-1
Ground Spreader GS-2
camRade tripodBag Traveler



Weight	9.18 kg/20.24 lbs
Height Range	0.55-1.72 m/21.7-67.7 in
Transport Length	0.89 m/35 in
Section	2 Stages

Camgear Elite 12 MS CF Bowl 100MM

Tripod System incl. Elite 12 Fluid Head, Carbon Fiber Tripod & Mid Level Spreader.
SKU: CMG-EL12-MS-CF-TRISYS

System Configuration

Elite 12 Fluid Head
3S-FIX ENG/CF2 Carbon Fiber Tripod
Elite Pan Bar ELPB-1
Mid Level Spreader MSP-3
Rubber Feet RF-2 (x3)
camRade tripodBag Traveler



Weight	9 kg/19.84 lbs
Height Range	0.6-1.65 m/23.6-65 in
Transport Length	0.89 m/35 in
Section	2 Stages

Camgear Elite 12 MS AL Bowl 100MM

Tripod System incl. Elite 12 Fluid Head, Aluminum Tripod & Mid Level Spreader.
SKU: CMG-EL12-MS-AL-TRISYS

System Configuration

Elite 12 Fluid Head
3S-FIX ENG/AL2 Aluminum Tripod,
Elite Pan Bar ELPB-1
Mid Level Spreader MSP-3
Rubber Feet RF-2 (x3)
camRade tripodBag Traveler



Weight	9.64 kg/21.25 lbs
Height Range	0.6-1.65 m/23.6-65 in
Transport Length	0.89 m/35 in
Section	2 Stages

Camgear Elite 15

Payload 19KG Bowl 100MM

Camgear Elite 15 Fluid Head

Fluid Head incl. Elite Wedge Plate TNG-16 & Elite Pan Bar ELPB-1
SKU: CMG-EL15-FLHEAD

Specifications

Model Number	Elite 15
Maximum Payload	19 kg/41.9 lbs
Camera Platform Type	Elite Wedge Plate TNG-16
Sliding Range	80 mm/3.15 in
Camera Plate	1/4" screw, 3/8" screw
Counterbalance System	6+10 steps (1-6, 1-10)

Pan & Tilt Drag	6 steps (1-6)
Pan & Tilt Range	Pan: 360° / Tilt: +90/-75°
Temperature Range	-40°C to +60°C/-40 to +144°F
Levelling Bubble	Illuminated Touch Levelling Bubble
Weight	3.66 kg/8.07 lbs
Bowl Diameter	100 mm

The Elite 15 is the unequalled leader for an elite performing, robust yet cost effective solution for news, documentary, broadcast professionals and digital filmmakers. It supports a maximum payload of 19 kg/41.9 lbs and has a 6+10 (60) step counterbalance wheel adjustment system which enables finer and faster counterbalance settings. The Elite 15 can virtually perfectly balance any payload between 0 and 42 pounds, a world's first.

The Elite 15 tripod systems come with the matching patented Elite 3S-FIX Quick Lock & Release 100 mm 70 kg/154 lbs capacity tripod system, illuminated levelling bubble with sliding plate screw parking positions and the integrated screw key to make your operation run smoothly.



Camgear Elite 15 GS CF Bowl 100MM

Tripod System incl. Elite 15 Fluid Head, Carbon Fiber Tripod & Ground Spreader.
SKU: CMG-EL15-GS-CF-TRISYS

System Configuration

Elite 15 Fluid Head
3S-FIX ENG/CF2 Carbon Fiber Tripod
Elite Pan Bar ELPB-1
Ground Spreader GS-2
camRade tripodBag Traveler



Weight	8.74 kg/19.27 lbs
Height Range	0.55-1.72 m/21.7-67.7 in
Transport Length	0.89 m/35 in
Section	2 Stages

Camgear Elite 15 GS AL Bowl 100MM

Tripod System incl. Elite 15 Fluid Head, Aluminum Tripod & Ground Spreader.
SKU: CMG-EL15-GS-AL-TRISYS

System Configuration

Elite 15 Fluid Head
3S-FIX ENG/AL2 Aluminum Tripod
Elite Pan Bar ELPB-1
Ground Spreader GS-2
camRade tripodBag Traveler



Weight	9.38 kg/20.68 lbs
Height Range	0.55-1.72 m/21.7-67.7 in
Transport Length	0.89 m/35 in
Section	2 Stages

Camgear Elite 15 MS CF Bowl 100MM

Tripod System incl. Elite 15 Fluid Head, Carbon Fiber Tripod & Mid Level Spreader.
SKU: CMG-EL15-MS-CF-TRISYS

System Configuration

Elite 15 Fluid Head
3S-FIX ENG/CF2 Carbon Fiber Tripod
Elite Pan Bar ELPB-1
Mid Level Spreader MSP-3
Rubber Feet RF-2 (x3)
camRade tripodBag Traveler



Weight	9.2 kg/20.28 lbs
Height Range	0.6-1.65 m/23.6-65 in
Transport Length	0.89 m/35 in
Section	2 Stages

Camgear Elite 15 MS AL Bowl 100MM

Tripod System incl. Elite 15 Fluid Head, Aluminum Tripod & Mid Level Spreader.
SKU: CMG-EL15-MS-AL-TRISYS

System Configuration

Elite 15 Fluid Head
3S-FIX ENG/AL2 Aluminum Tripod
Elite Pan Bar ELPB-1
Mid Level Spreader MSP-3
Rubber Feet RF-2 (x3)
camRade tripodBag Traveler



Weight	9.84 kg/21.69 lbs
Height Range	0.6-1.65 m/23.6-65 in
Transport Length	0.89 m/35 in
Section	2 Stages

Camgear Elite 18

Payload 25KG Bowl 100MM

Camgear Elite 18 Fluid Head

Fluid Head incl. Elite Wedge Plate TNG-16 & Elite Telescopic Pan Bar ELPB-2 (set of 2)

SKU: CMG-EL18-FLHEAD

Specifications

Model Number	Elite 18
Maximum Payload	25 kg/55.1 lbs
Camera Platform Type	Elite Wedge Plate TNG-16
Sliding Range	110 mm/4.33 in
Camera Plate	1/4" screw, 3/8" screw
Counterbalance System	8+10 steps (1-8, 1-10)

Pan & Tilt Drag	8 steps (1-8)
Pan & Tilt Range	Pan: 360° / Tilt: +90/-75°
Temperature Range	-40°C to +60°C/-40 to +144°F
Levelling Bubble	Illuminated Touch Levelling Bubble
Weight	4.8 kg/10.58 lbs
Bowl Diameter	100 mm

The high payload capacity and incredibly wide payload range of 0- 25 kg/55.1 lbs makes the Elite 18 ideal for ENG/EFP field-based 4K/HD productions and small studio configurations as well. Its high reliability and robust design makes it ideal for portable broadcast cameras and camcorders and small field prompters.

The Elite 18 tripod systems come with the matching patented Elite 3S-FIX Quick Lock & Release 100 mm 70 kg/154 lbs (ENG) or 110 kg/ 243 lbs (EFP) capacity tripod. The illuminated levelling bubble, sliding plate screw parking positions and the integrated screw key help to make your operation run smoothly.



Camgear Elite 18 GS CF Bowl 100MM

Tripod System incl. Elite 18 Fluid Head, Carbon Fiber Tripod & Ground Spreader.

SKU: CMG-EL18-GS-CF-TRISYS

System Configuration

Elite 18 Fluid Head
3S-FIX ENG/CF2 Carbon Fiber Tripod Elite
Telescopic Pan Bar ELPB-2 (set of 2)
Ground Spreader GS-2
camRade tripodBag Traveler



Weight	9.88 kg/21.78 lbs
Height Range	0.57-1.74 m/22.4-68.5 in
Transport Length	0.91 m/35.8 in
Section	2 Stages

Camgear Elite 18 GS AL Bowl 100MM

Tripod System incl. Elite 18 Fluid Head, Aluminum Tripod & Ground Spreader.

SKU: CMG-EL18-GS-AL-TRISYS

System Configuration

Elite 18 Fluid Head
3S-FIX ENG/AL2 Aluminum Tripod Elite
Telescopic Pan Bar ELPB-2 (set of 2)
Ground Spreader GS-2
camRade tripodBag Traveler



Weight	10.52 kg/23.19 lbs
Height Range	0.57-1.74 m/22.4-68.5 in
Transport Length	0.91 m/35.8 in
Section	2 Stages

Camgear Elite 18 MS CF Bowl 100MM

Tripod System incl. Elite 18 Fluid Head, Carbon Fiber Tripod & Mid Level Spreader.

SKU: CMG-EL18-MS-CF-TRISYS

System Configuration

Elite 18 Fluid Head
3S-FIX ENG/CF2 Carbon Fiber Tripod Elite
Telescopic Pan Bar ELPB-2 (set of 2)
Mid Level Spreader MSP-3
Rubber Feet RF-2 (x3)
camRade tripodBag Traveler



Weight	10.34 kg/22.80 lbs
Height Range	0.62-1.67 m/24.4-65.7 in
Transport Length	0.91 m/35.8 in
Section	2 Stages

Camgear Elite 18 MS AL Bowl 100MM

Tripod System incl. Elite 18 Fluid Head, Aluminum Tripod & Mid Level Spreader.

SKU: CMG-EL18-MS-AL-TRISYS

System Configuration

Elite 18 Fluid Head
3S-FIX ENG/AL2 Aluminum Tripod Elite
Telescopic Pan Bar ELPB-2 (set of 2)
Mid Level Spreader MSP-3
Rubber Feet RF-2 (x3)
camRade tripodBag Traveler



Weight	10.98 kg/24.2 lbs
Height Range	0.62-1.67 m/24.4-65.7 in
Transport Length	0.91 m/35.8 in
Section	2 Stages

Camgear Elite 18 EFP **GS CF** Bowl 100mm

Tripod System incl. Elite 18 Fluid Head, Carbon Fiber Tripod & Ground Spreader.

SKU: CMG-EL18-EFP-GS-CF-TRISYS



System Configuration

Elite 18 Fluid Head
3S-FIX EFP100/CF2 Carbon Fiber Tripod
Elite Telescopic Pan Bar ELPB-2 (set of 2)
Ground Spreader GS-2
camRade tripodBag heavyDuty



Weight	13.04 kg/28.75 lbs
Height Range	0.73-1.78 m/28.7-70 in
Transport Length	0.97 m/38.2 in
Section	2 Stages

Camgear Elite 18 EFP **MS CF** Bowl 100mm

Tripod System incl. Elite 18 Fluid Head, Carbon Fiber Tripod & Mid Level Spreader.

SKU: CMG-EL18-EFP-MS-CF-TRISYS



System Configuration

Elite 18 Fluid Head
3S-FIX EFP100/CF2 Carbon Fiber Tripod
Elite Telescopic Pan Bar ELPB-2 (set of 2)
Mid Level Spreader MSP-3
Rubber Feet RF-2 (x3)
camRade tripodBag heavyDuty



Weight	13.5 kg/29.76 lbs
Height Range	0.76-1.74 m/30-68.5 in
Transport Length	0.97 m/38.2 in
Section	2 Stages

Effortless support
during any shoot,
at any location.



Camgear Elite 20 Payload 29KG Bowl 100MM

Camgear Elite 20 Fluid Head

Fluid Head incl. Elite Wedge Plate TNG-16 & Elite Telescopic Pan Bar ELPB-2 (set of 2)
SKU: CMG-EL20-FLHEAD

Specifications

Model Number	Elite 20
Maximum Payload	29 kg/63.9 lbs
Camera Platform Type	Elite Wedge Plate TNG-16
Sliding Range	110 mm/4.33 in
Camera Plate	1/4" screw, 3/8" screw
Counterbalance System	10+10 steps (1-10, 1-10)
Pan & Tilt Drag	8 steps (1-8)
Pan & Tilt Range	Pan: 360° / Tilt: +90/-75°
Temperature Range	-40°C to +60°C/-40 to +144°F
Levelling Bubble	Illuminated Touch Levelling Bubble
Weight	5.24 kg/11.55 lbs
Bowl Diameter	100 mm

The Elite 20 is the strongest solution in the 100 mm Elite-Series range and it supports a payload of up to 29 kg/63.9 lbs. With the 10+10 (100) step counterbalance adjustment range it can virtually perfectly balance anything from a GoPro to a small ENG studio configuration with full 21" Teleprompter. The wide operating temperature range and several other practical features makes it ideal for EFP and field-based 4K/HD and digital film productions as well. It supports broadcast and film cameras in various heavy configurations.

The Elite 20 tripod systems come with the matching patented Elite 3S-FIX Quick Lock & Release 100 mm 110 kg/243 lbs capacity EFP-HD tripod, illuminated levelling bubble with sliding plate screw parking positions and the integrated screw key to make your operation run smoothly.



Camgear Elite 20 EFP GS CF Bowl 100MM

Tripod System incl. Elite 20 Fluid Head, Carbon Fiber Tripod & Ground Spreader.

SKU: CMG-EL20-EFP-GS-CF-TRISYS



System Configuration

Elite 20 Fluid Head
3S-FIX EFP100/CF2 Carbon Fiber Tripod
Elite Telescopic Pan Bar ELPB-2 (set of 2)
Ground Spreader GS-2
camRade tripodBag heavyDuty



Weight	13.48 kg/29.72 lbs
Height Range	0.73-1.78 m/28.7-70 in
Transport Length	0.97 m/38.2 in
Section	2 Stages

Camgear Elite 20 EFP MS CF Bowl 100MM

Tripod System incl. Elite 20 Fluid Head, Carbon Fiber Tripod & Mid Level Spreader.

SKU: CMG-EL20-EFP-MS-CF-TRISYS



System Configuration

Elite 20 Fluid Head
3S-FIX EFP100/CF2 Carbon Fiber Tripod
Elite Telescopic Pan Bar ELPB-2 (set of 2)
Mid Level Spreader MSP-3
Rubber Feet RF-2 (x3)
camRade tripodBag heavyDuty



Weight	13.94 kg/30.73 lbs
Height Range	0.76-1.74 m/30-68.5 in
Transport Length	0.97 m/38.2 in
Section	2 Stages

Camgear Elite 25 Payload 45KG Bowl 150MM

Camgear Elite 25 Fluid Head

Fluid Head incl. Elite Wedge Plate TNG-35 & Elite Telescopic Pan Bar ELPB-2 (set of 2)
SKU: CMG-EL25-FLHEAD

Specifications

Model Number	Elite 25
Maximum Payload	45 kg/100 lbs
Camera Platform Type	Elite Wedge Plate TNG-35
Sliding Range	120 mm/4.72 in
Camera Plate	1/4" screw, 3/8" screw
Counterbalance System	12+10 steps (1-12, 1-10)
Pan & Tilt Drag	10 steps (1-10)
Pan & Tilt Range	Pan: 360° / Tilt: +90°/-75°
Temperature Range	-40°C to +60°C/-40 to +144°F
Levelling Bubble	Illuminated Touch Levelling Bubble
Weight	9.58 kg/21.12 lbs
Bowl Diameter	150 mm

The Elite 25 is the only 150 mm head on the market in this capacity range using an ultra functional spindle drive sliding camera mounting plate, for finer camera plate adjustment. It offers a 12+10 (120) step counterbalance adjustment system, ensuring a virtual perfect balance for any and all payloads. Combined with its assembly (build) lock mechanism and many other practical features, it is the truly perfect solution for EFP and 4K/HD production, studio applications with full large teleprompter and confidence monitors and compact studio lenses, 3D-rigs and outside broadcast applications.

The Elite 25 tripod systems come with the matching patented Elite 3S-FIX Quick Lock & Release 150 mm 110 kg/243 lbs capacity EFP-HD tripod, illuminated levelling bubble with sliding plate screw parking positions and the integrated screw key to make your operation run smoothly.

Camgear Elite 25 EFP GS CF Bowl 150MM

Tripod System incl. Elite 20 Fluid Head, Carbon Fiber Tripod & Ground Spreader.

SKU: CMG-EL25-EFP-GS-CF-TRISYS



System Configuration

Elite 25 Fluid Head
3S-FIX EFP150/CF2 Carbon Fiber Tripod
Elite Telescopic Pan Bar ELPB-2 (set of 2)
Ground Spreader GS-2
camRade tripodBag heavyDuty



Weight	17.82 kg/39.29 lbs
Height Range	0.75-1.83 m/29.5-72 in
Transport Length	0.99 m/39 in
Section	2 Stages

Camgear Elite 25 EFP MS CF Bowl 150MM

Tripod System incl. Elite 20 Fluid Head, Carbon Fiber Tripod & Mid Level Spreader.

SKU: CMG-EL25-EFP-MS-CF-TRISYS



System Configuration

Elite 25 Fluid Head
3S-FIX EFP150/CF2 Carbon Fiber Tripod
Elite Telescopic Pan Bar ELPB-2 (set of 2)
Mid Level Spreader MSP-3
Rubber Feet RF-2 (x3)
camRade tripodBag heavyDuty



Weight	18.28 kg/40.3 lbs
Height Range	0.79-1.76 m/31.1-69.3 in
Transport Length	0.99 m/39 in
Section	2 Stages





“My old tripod really needed to be replaced and after a long search I stopped at Camgear with the new Elite-Series. The magnets in the legs, the weight and the robustness are all great extras. The tripod can be set-up literally in seconds, with 3 clicks using the new 3S-FIX mechanism. When you combine it with a Mid Level spreader, it's also really suitable to use on uneven surfaces.”

Rene Lunshof
Freelance Cameraman,
the Netherlands

Camgear 3S-FIX Tripods

Camgear 3S-FIX T75/AL2 GS Aluminum Tripod

2-Stage 75 mm bowl Aluminium Tripod with Ground Spreader.
SKU: CMG-3SF-T75-AL2-TRIPOD

- ◆ 2-Stage aluminum tripod with 75 mm bowl.
- ◆ Lightweight & robust and supports up to 50 kg/110 lbs.
- ◆ Double extension tripods are ideal for a wide variety of applications.
- ◆ Supplied with Ground Spreader GS-2.
- ◆ Can be combined with Mid-Level Spreader MSP-3, with Rubber Feet RF-2.
- ◆ Equipped with 3S-FIX Quick Lock & Release mechanism.



Payload	50 kg/110 lbs
Bowl Diameter	75 mm
Material	Aluminum
Weight	4.98 kg/10.98 lbs

Height Range	0.35-1.51 m/13.8-59.4 in
Transport Length	0.72 m/28.3 in
Section	2 Stages

Camgear 3S-FIX T75/CF2 GS Carbon Fiber Tripod

2-Stage 75 mm bowl Carbon Fiber Tripod with Ground Spreader.
SKU: CMG-3SF-T75-CF2-TRIPOD

- ◆ 2-Stage carbon fiber tripod with 75 mm bowl.
- ◆ Lightweight & robust and supports up to 50 kg/110 lbs.
- ◆ Double extension tripods are ideal for a wide variety of applications.
- ◆ Supplied with Ground Spreader GS-2.
- ◆ Can be combined with Mid Level Spreader MSP-3, with Rubber Feet RF-2.
- ◆ Equipped with 3S-FIX Quick Lock & Release mechanism.



Payload	50 kg/110 lbs
Bowl Diameter	75 mm
Material	Carbon Fiber
Weight	4.25 kg/9.37 lbs

Height Range	0.35-1.51 m/13.8-59.4 in
Transport Length	0.72 m/28.3 in
Section	2 Stages

Camgear 3S-FIX Tripods

Camgear 3S-FIX T100/AL2 GS Aluminum Tripod

2-Stage 100 mm bowl Aluminium Tripod with Ground Spreader.
SKU: CMG-3SF-T100-AL2-TRIPOD

- ◆ 2-Stage aluminum tripod with 100 mm bowl.
- ◆ Lightweight & robust and supports up to 50 kg/110 lbs.
- ◆ Double extension tripods are ideal for a wide variety of applications.
- ◆ Supplied with Ground Spreader GS-2.
- ◆ Can be combined with Mid Level Spreader MSP-3, with Rubber Feet RF-2.
- ◆ Equipped with 3S-FIX Quick Lock & Release mechanism.



Payload	50 kg/110 lbs
Bowl Diameter	100 mm
Material	Aluminum
Weight	5.04 kg/11.11 lbs

Height Range	0.35-1.51 m/13.8-59.4 in
Transport Length	0.72 m/28.3 in
Section	2 Stages

Camgear 3S-FIX T100/CF2 GS Carbon Fiber Tripod

2-Stage 100 mm bowl Carbon Fiber Tripod with Ground Spreader.
SKU: CMG-3SF-T100-CF2-TRIPOD

- ◆ 2-Stage carbon fiber tripod with 100 mm bowl.
- ◆ Lightweight & robust and supports up to 50 kg/110 lbs.
- ◆ Double extension tripods are ideal for a wide variety of applications.
- ◆ Supplied with Ground Spreader GS-2.
- ◆ Can be combined with Mid Level Spreader MSP-3, with Rubber Feet RF-2.
- ◆ Equipped with 3S-FIX Quick Lock & Release mechanism.



Payload	50 kg/110 lbs
Bowl Diameter	100 mm
Material	Carbon Fiber
Weight	4.32 kg/9.52 lbs

Height Range	0.35-1.51 m/13.8-59.4 in
Transport Length	0.72 m/28.3 in
Section	2 Stages

Camgear 3S-FIX Tripods

Camgear 3S-FIX ENG/AL2 GS Aluminum Tripod

2-Stage 100 mm bowl Aluminium ENG Tripod with Ground Spreader.
SKU: CMG-3SF-ENG-AL2-TRIPOD

- ◆ 2-Stage aluminum tripod with 100 mm bowl.
- ◆ Sturdy and robust design, supports up to 70 kg/154 lbs and is suitable for ENG application.
- ◆ Double extension tripods are ideal for a wide variety of applications.
- ◆ Supplied with Ground Spreader GS-2.
- ◆ Can be combined with Mid Level Spreader MSP-3, with Rubber Feet RF-2.
- ◆ Equipped with 3S-FIX Quick Lock & Release mechanism.



Payload	70 kg/154 lbs
Bowl Diameter	100 mm
Material	Aluminum
Weight	5.36 kg/11.81 lbs

Height Range	0.39-1.55 m/15.4-61 in
Transport Length	0.74 m/29.1 in
Section	2 Stages

Camgear 3S-FIX ENG/CF2 GS Carbon Fiber Tripod

2-Stage 100 mm bowl Carbon Fiber ENG Tripod with Ground Spreader.
SKU: CMG-3SF-ENG-CF2-TRIPOD

- ◆ 2-Stage carbon fiber tripod with 100 mm bowl.
- ◆ Sturdy and robust design, supports up to 70 kg/154 lbs and is suitable for ENG application.
- ◆ Double extension tripods are ideal for a wide variety of applications.
- ◆ Supplied with Ground Spreader GS-2.
- ◆ Can be combined with Mid Level Spreader MSP-3, with Rubber Feet RF-2.
- ◆ Equipped with 3S-FIX Quick Lock & Release mechanism.



Payload	70 kg/154 lbs
Bowl Diameter	100 mm
Material	Carbon Fiber
Weight	4.72 kg/10.41 lbs

Height Range	0.39-1.55 m/15.4-61 in
Transport Length	0.74 m/29.1 in
Section	2 Stages

Camgear 3S-FIX Tripods

Camgear 3S-FIX EFP100/CF2 GS Carbon Fiber Tripod

2-Stage 100 mm bowl Carbon Fiber heavy-duty EFP Tripod with Ground Spreader.
SKU: CMG-3SF-EFP100-CF2-TRIPOD

- ◆ 2-Stage heavy-duty carbon fiber tripod with 100 mm bowl.
- ◆ Very sturdy construction and high torsion rigidity which ensure a rock solid base for a majority of cameras.
- ◆ Supports up to 110 kg/243 lbs and is an ideal solution for EFP, 4K/HD production and studio application.
- ◆ Supplied with Ground Spreader GS-2.
- ◆ Can be combined with Mid Level Spreader MSP-3, with Rubber Feet RF-2.
- ◆ Equipped with 3S-FIX Quick Lock & Release mechanism.



Payload	110 kg/243 lbs
Bowl Diameter	100 mm
Material	Carbon Fiber
Weight	7.22 kg/15.92 lbs

Height Range	0.54-1.59 m/21.3-62.6 in
Transport Length	0.78 m/30.7 in
Section	2 Stages

Camgear 3S-FIX EFP150/CF2 GS Carbon Fiber Tripod

2-Stage 150 mm bowl Carbon Fiber heavy-duty EFP Tripod with Ground Spreader.
SKU: CMG-3SF-EFP150-CF2-TRIPOD

- ◆ 2-Stage heavy-duty carbon fiber tripod with 150 mm bowl.
- ◆ Very sturdy construction and high torsion rigidity which ensure a rock solid base for a majority of cameras.
- ◆ Supports up to 110 kg/243 lbs and is an ideal solution for EFP, 4K/HD production and studio application.
- ◆ Supplied with Ground Spreader GS-2.
- ◆ Can be combined with Mid Level Spreader MSP-3, with Rubber Feet RF-2.
- ◆ Equipped with 3S-FIX Quick Lock & Release mechanism.



Payload	110 kg/243 lbs
Bowl Diameter	150 mm
Material	Carbon Fiber
Weight	7.52 kg/16.58 lbs

Height Range	0.54-1.59 m/21.3-62.6 in
Transport Length	0.78 m/30.7 in
Section	2 Stages

Accessories

Ground Spreaders

Ground Spreader GS-2

For all Elite Tripod Systems
SKU: CMG-GROUNDSPDR-2



Payload
60 kg/132.2 lbs

Weight
0.82 kg/1.83 lbs

Build-up radius
35-60 cm/13-22.8 in

Cine Ground Spreader GS-3

For Elite 18, 20 & 25 Tripod Systems
SKU: CMG-GROUNDSPDR-3



Payload
140 kg/308 lbs

Weight
1.9 kg/4.2 lbs

Build-up radius
39-58 cm/15.4-22.8 in

Heavy-Duty Ground Spreader GS-4

For Elite 18, 20 & 25 Tripod Systems
SKU: CMG-GROUNDSPDR-4



Payload
140 kg/308 lbs

Weight
1.78 kg/3.9 lbs

Build-up radius
35-58 cm/13.8-22.8 in

Dollies

Dolly S

For Elite 8, 10, 12 & 15 Tripod Systems
SKU: CMG-DOLLY-S



Payload
35 kg/77.2 lbs

Weight
3.32 kg/7.3 lbs

Dimensions
H: 19 cm/H: 7.5 in

Build-up radius
51 cm/20 in

Dolly L

For all Elite Tripod Systems
SKU: CMG-DOLLY-L



Payload
100 kg/220 lbs

Weight
4.94 kg/10.9 lbs

Dimensions
H: 19 cm/H: 7.5 in

Build-up radius
51 cm/20 in

Dolly XL

For Elite 25 Tripod Systems
SKU: CMG-DOLLY-XL



Payload
150 kg/330.7 lbs

Weight
14 kg/30.86 lbs

Dimensions
H: 19 cm/H: 7.5 in

Build-up radius
51 cm/20 in

Mid Level Spreaders & Rubber Feet

Mid Level Spreader MSP-3

For all Elite Tripod Systems
SKU: CMG-MIDSPREADER-3



Weight
0.84 kg/1.85 lbs

Rubber Feet RF-1 (set of 3)

For all Elite Tripod Systems
SKU: CMG-RUBBERFEET-1



Weight
0.30 kg/0.66 lbs

Rubber Feet RF-2 (set of 3)

For all Elite Tripod Systems
SKU: CMG-RUBBERFEET-2



Weight
0.44 kg/0.97 lbs

Pan Bars

Elite Pan Bar ELPB-1

For Elite 8, Elite 10, Elite 12 & Elite 15
Fluid Heads/Tripod Systems
SKU: CMG-ELPB-1



Weight
0.36 kg/0.79 lbs

Dimensions
42.5 cm/1.67 in

Elite Telescopic Pan Bar ELPB-2 (set of 2)

For Elite 18, Elite 20 & Elite 25 Fluid Heads/
Tripod Systems
SKU: CMG-ELTELEPB-2



Weight
1 kg/2.2 lbs

Dimensions
35-58 cm/13.7-22.8 in

Elite Telescopic Pan Bar ELPB-4 (set of 2)

For Elite 8, Elite 10, Elite 12 & Elite 15
Fluid Heads/Tripod Systems
SKU: CMG-ELTELEPB-4



Weight
0.97 kg/2.14 lbs

Dimensions
35-58 cm/13.8-22.8 in

Wedge Plates

Elite Wedge Plate TNG-16

For Elite 10, Elite 12, Elite 15, Elite 18 & Elite 20 Fluid Heads / Tripod Systems
SKU: CMG-ELPLATE-TNG16



Weight
80 g/0.18 lbs

Dimensions
15 x 6.5 cm/5.9 x 2.6 in

Elite Wedge Plate TNG-35

For Elite 25 Fluid Heads / Tripod Systems
SKU: CMG-ELPLATE-TNG35



Weight
190 g/0.42 lbs

Dimensions
12 x 8 cm/4.7 x 3.1 in

Elite Wedge Plate TNG-DV

For Elite 8 Fluid Heads / Tripod Systems
SKU: CMG-ELPLATE-TNGDV



Weight
46 g/0.10 lbs

Dimensions
6.2 x 4.5 cm/2.4 x 1.8 in

Adapter plates

Tripod Adapter TA-2

V-mount tripod plate with quick-release mechanism
SKU: CMG-TRIPODADAPT-2



Weight
840 g/1.85 lbs

Dimensions
285 x 30 x 80 mm/11 x 1.2 x 3.1 in

- ◆ The Tripod Adapter plate TA-2 allows professional broadcast cameras to be attached to any VCT-14 style tripod (wedge plate).
- ◆ Universal V-mount quick-release system allowing rapid transition from shoulder mounted and tripod shooting.
- ◆ It features a red safety lever and a black lock lever to minimize the chance of accidental dismounting of the camera.
- ◆ Compatible with all V-mount plates with quick-release system.
- ◆ Suited for all professional broadcast cameras with a V-mount mechanism.
- ◆ Multiple mounting locations to provide perfect balance.

Bowl Clamps

Bowl Clamp BC-1

Low Profile for all Elite Heads
SKU: CMG-BOWLCLAMP-1



Weight
130 g/0.28 lbs

Bowl Clamp BC-2

For all Elite Heads
SKU: CMG-BOWLCLAMP-2



Weight
130 g/0.28 lbs

Bowl Clamp BC-3

For Elite 25 Head
SKU: CMG-BOWLCLAMP-3



Weight
200 g/0.44 lbs

Bags & Cases

Travelling Case Tripod 100/150

For Elite 18, Elite 20 & Elite 25
SKU: CMG-TRAVELCASE-100-150



Diameter
30 cm/11.8 in

Length
105 cm/41.3 in

Weight
6.7 kg/14.77 lbs

camRade tripodBag Traveler

Supplied with the Elite 8, Elite 10, Elite 12, Elite 15 & Elite 18 Tripod Systems
SKU: CAM-TRIPB-TRAVELER



- ◆ Stylish and tough tripodBag made of water-resistant 1000 denier Cordura® exteriors, YKK® zippers and a rich deep blue soft padded interior for mid-range tripod systems.
- ◆ Easy transportation is ensured by rugged wheels, a fully adjustable padded shoulder strap and a cushion to protect and secure the fluid head.
- ◆ Supplied with 2 removable bumpers and several zippered pockets to customize the interior of the bag.

CAMRADE
www.camrade.com

Outside dimensions (including wheels)
104 x 25 x 23 cm/40.9 x 9.8 x 9.1 in

Weight
4.85 kg/10.69 lbs

Inside dimension (without bumpers)
98 x 21 x 21 cm/38.6 x 8.3 x 8.3 in

camRade tripodBag heavyDuty

Supplied with the Elite 18 EFP, Elite 20 EFP & Elite 25 EFP Tripod Systems
SKU: CAM-TRIPB-HD



- ◆ Stylish and tough tripodBag made of water-resistant 1000 denier Cordura® exteriors, YKK® zippers and a rich deep blue soft padded interior for heavy-duty tripod systems.
- ◆ Easy transportation is ensured by rugged wheels, a fully adjustable padded shoulder strap and a cushion to protect and secure the fluid head.
- ◆ Supplied with 2 removable bumpers and several zippered pockets to customize the interior of the bag.

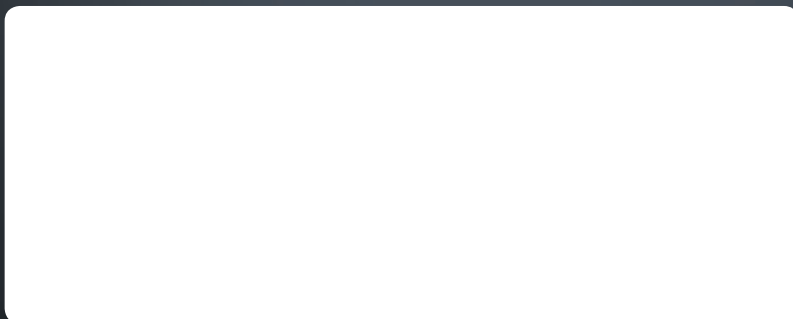
CAMRADE
www.camrade.com

Outside dimensions (including wheels)
116 x 30 x 27 cm/45.7 x 11.8 x 10.6 in

Weight
6.80 kg/14.99 lbs

Inside dimensions (without bumpers)
108 x 25 x 25 cm/42.5 x 9.8 x 9.8 in

YOUR LOCAL RESELLER:



www.camgear-pro.com

This catalog has been compiled with the greatest possible care. However, mistakes or changes in models, designs, specifications, visuals or any other information are under reserve. No rights can be derived in any way from the content of this catalog. Technical additions or errors do not constitute grounds for compensation claims.